

Epson EH-TW80000

Full HD, 3D Home Theatre Projector



Enjoy the ultimate 3D cinematic experiences at home. The EH-TW8000 brings the power of 3D right to your living room with 480 Hz Active Shutter and Full HD, 1080p performance. Immerse yourself in eye-popping 3D adventures with 2,400 lumens colour/white light output and an astounding contrast ratio of up to 200,000:1. It's never been easier to entertain family and friends with the ultimate cinematic experience.

KEY FEATURES:

- **200,000:1 High Contrast Ratio** – Bright whites and deep blacks for stunning image quality
- **High Brightness 3D** – Full HD, 480Hz active shutter technology allows you to enjoy thrilling 3D adventures in the comfort of your own home
- **FineFrame Interpolation** - Reduces flicker and frame to frame judder
- **2D – 3D Conversion** – Easily transform 2D images to spectacular 3D
- **Split Screen Feature** – Project two images side-by-side, making sure you don't miss out on any of the action
- **Installation flexibility** – Lens Shift and Keystone Correction

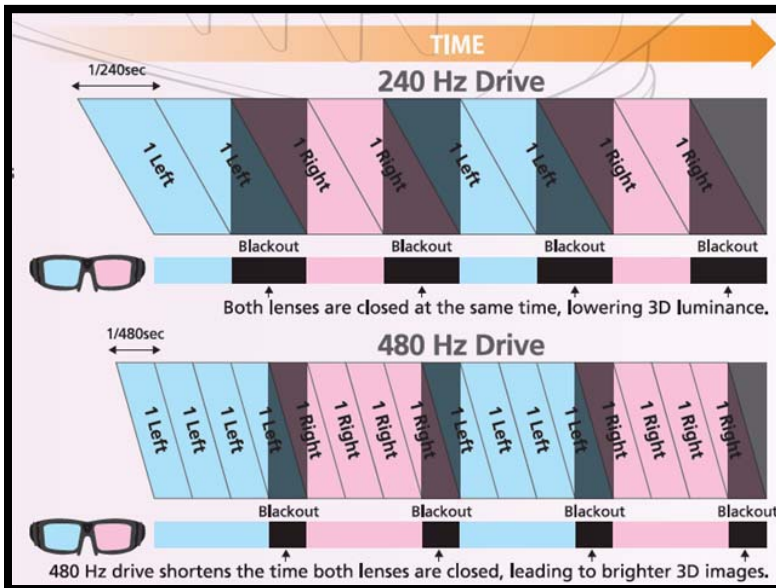
Target Market and Positioning

The Epson EH-TW8000 is the latest high performance home theatre projector from Epson. Designed for Home Theatre enthusiasts, the 3D ready Full HD projector delivers a true-to-life cinematic experience.

FEATURES AND BENEFITS:

High Contrast Ratio

Epson's UltraBlack technology provides deeper, darker blacks resulting in more vibrant and powerful images. Along with Epson's inorganic C2Fine D9 LCD panels, the EH-TW8000 delivers superb image quality and outstanding clarity.



High Brightness 3D

A major hurdle in all 3D is maintaining brightness. Epson has addressed this by using a 480 Hz Active Shutter system rather than the traditional 240 Hz System.

Epson's 480 Hz drive system minimizes the blackout time of 3D glasses. The less time the lenses are closed, the more light can come through, resulting in a brighter image.

FineFrame Interpolation

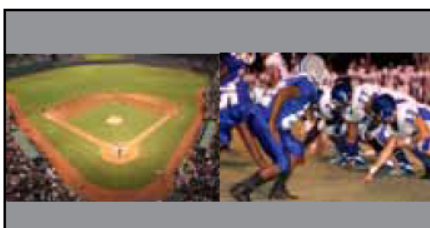
Film is encoded on DVD and Blu-ray at 24 frames per second. FineFrame deconstructs and reconstructs these sources for a 1080p frame rate output of up to 96 Hz, eliminating visible flicker and frame to frame judder. This allows for the free flow of scenes that contain a lot of action.

2D-3D Conversion

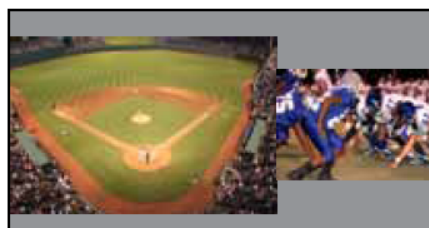
Take your favourite movies to the next level with the 2D to 3D converter in the EH-TW8000. This feature enables you to convert Full HD 2D images into natural looking Full HD 3D images.

Split Screen Feature

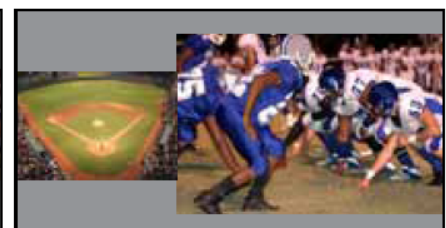
Project two images (video or still) side-by-side from two different sources simultaneously. Choose from three layout options. You can swap the images as well as choose the source for audio.



Layout Option 1: 50-50% split screen



Layout Option 2: Main image on left



Layout Option 3: Main image on right

Pricing and Information

Product Code	Description	RRP
V11H398053	Epson EH-TW8000	\$4,699

Part numbers and dimensions

Description	Part Number	Barcode
Epson EH-TW8000	V11H398053	9314020610677
Product Dimensions		
Max dimensions – W x H x D	466 x 158 x 395 mm	
Weight	8.2 kg	
Package Dimensions		
Dimensions - W x H x D	511 x 345 x 583 mm	
Weight	11.6 kg	

Accessories

Part Code	Description
V12H483001	3D Glasses - ELPGS01
V12H484001	External Emitter - ELPIE01
V13H010L69	Lamp - ELPLP69
V13H134A39	Air Filter - ELPAF39
V12H003B22	Ceiling Mount - ELPMB22

Specifications

Product Specifications	EH-TW8000
Native Resolution	1080p
Aspect Ratio	16:9
Zoom Ratio	1 - 2.1
Lamp	230W UHE (E-TROL)
Light Output	2,400 lumens
Colour Light Output	2,400 lumens
Contrast Ratio	200,000:1
Lens Shift - Vertical	-96.3% to +96.3%
Lens Shift – Horizontal	-47.1% to +47.1%
Noise Level (ECO)	22dB
3D Formats	Side by Side, Top and Bottom, and Frame Packaging
HDMI	x2
Component	x1
Video	x1
PC	x1
RS-232c	x1
Trigger-out	x1
LAN (for external 3D IR emitter)	x1

Connectivity Configurations

