



PREMIER™
STYLE • SYMMETRY • SOLIDITY

HIGH-PERFORMANCE
SPEAKER STANDS

1.0

All speakers suffer from a common problem...the listening room. To hear the full potential of your speakers, listening room effects must be minimized.

When "bookshelf" sized speakers are placed on a floor or up against a wall their sonic output becomes "connected" to your floor or walls, resulting in sound that is muddy, distorted and lacking in clarity. This type of placement also causes the speaker's sound to transfer into your...

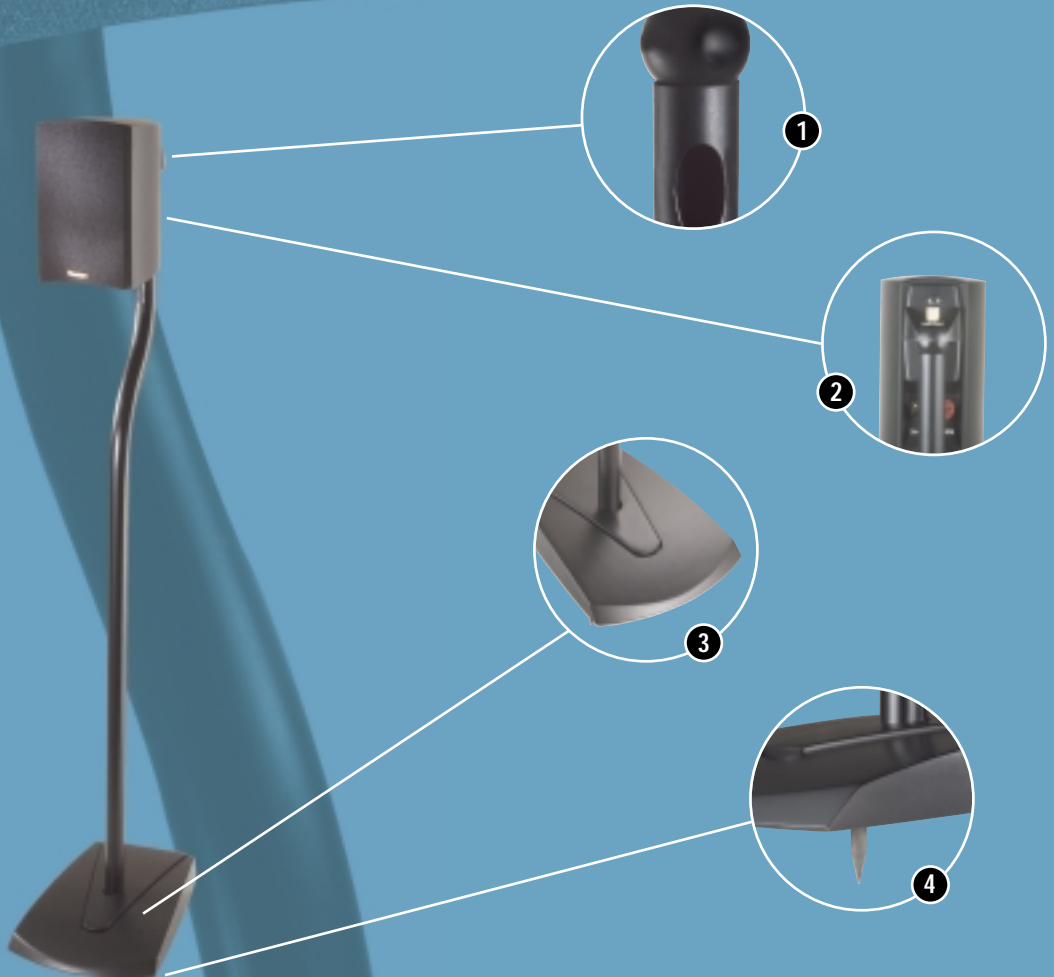
PREMIER™ LS-40 Speaker Stands

Features:

- Die-cast aluminum base. Figure (3)
- Steel tube centre post. Figure (2)
- Adjustable locking spiked feet. Figure (4)
- Holes in top of centre post and base allow speaker wiring to be hidden. Figure (1)

Available Heights (including spikes)

LS-40 40"



...Audio/Video furniture through to various other Audio/Home Theater components, further reducing sonic performance.

Not only does the speaker's sound suffer, but your neighbors and other family members will as well. How? When the speaker's sound gets into floors and walls they will hear it almost as loudly as you do...

PREMIER™ T-Series Speaker Stands

Features:

- High-density hardboard construction. Figure (1)
- Over-sized bases for increased stability. Figure (3)
- Isolation pads. Figure (2)
- Spiked feet. Figure (4)

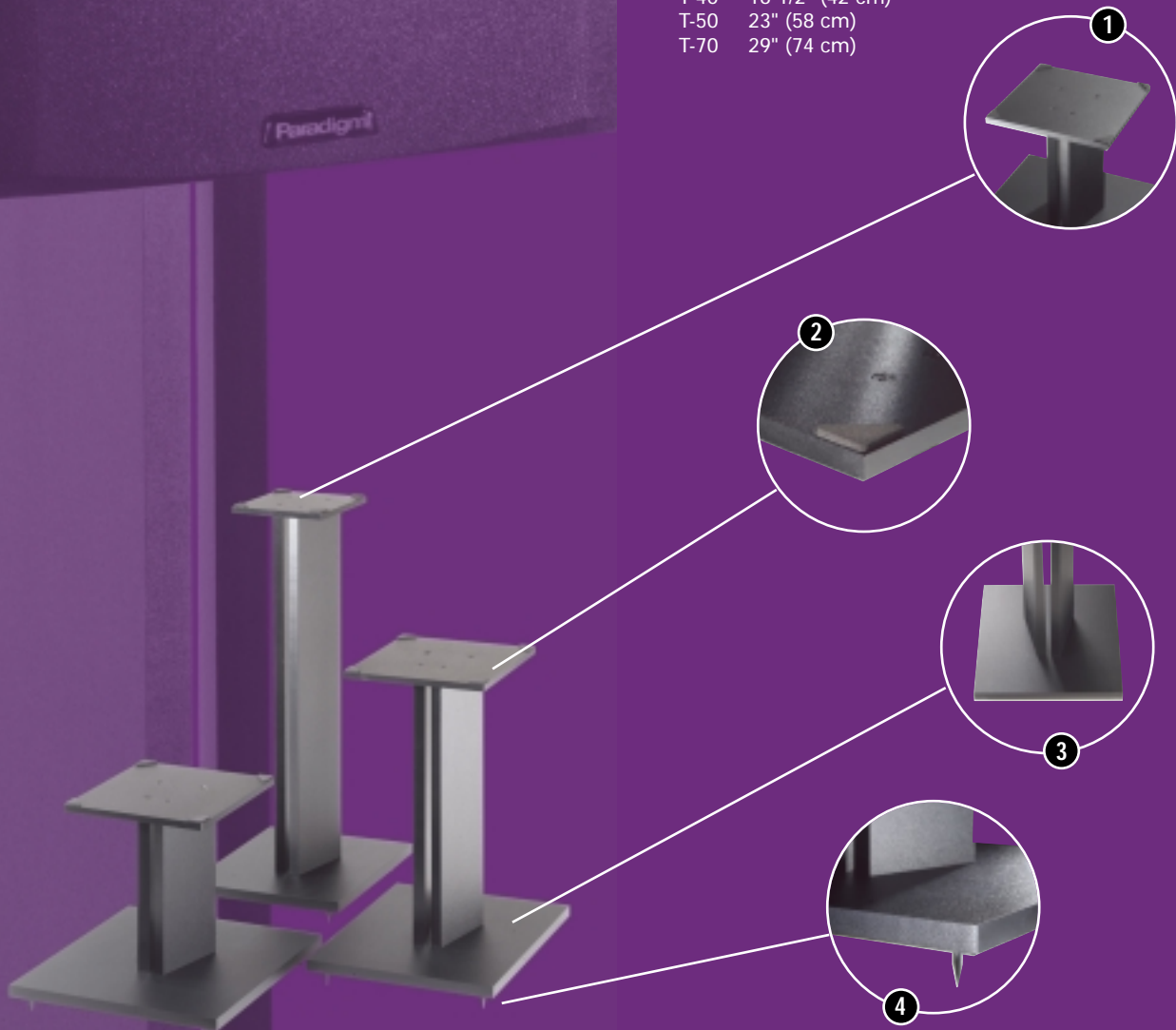
Available Heights (including spikes)

T-30 10-1/2" (27 cm)

T-40 16-1/2" (42 cm)

T-50 23" (58 cm)

T-70 29" (74 cm)



The solution is to isolate your speakers from floors and walls, and thereby "disconnect" the speaker's sound from your room.

PREMIER™ speaker stands isolate speakers from floors and walls, and elevate them to ear level. Sound comes alive. It is clearer, cleaner with much better imaging...

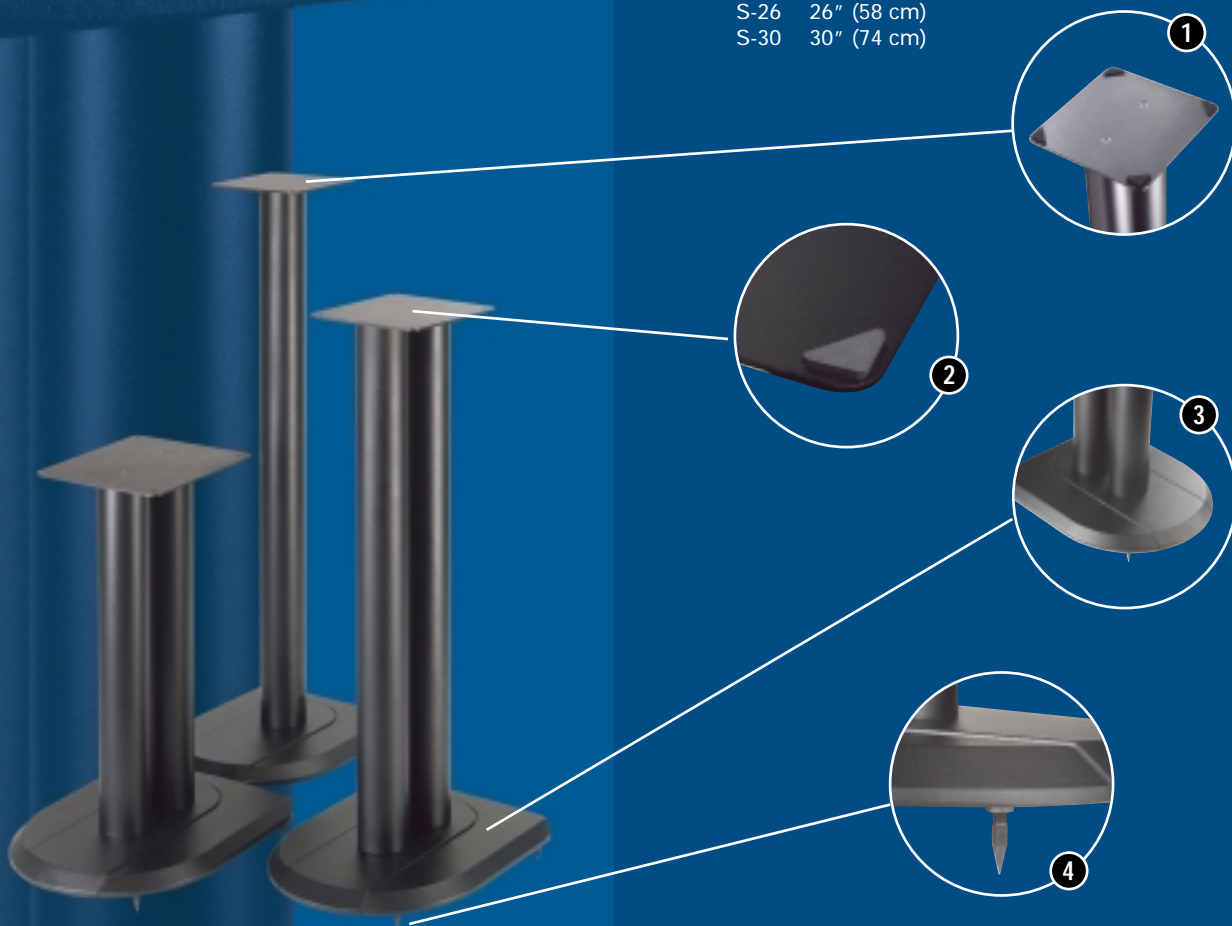
PREMIER™ S-Series Speaker Stands

Features:

- Die-cast aluminum base. Figure (3)
- Steel plate top. Figure (1)
- Steel tube centre posts.
- Centre posts can be filled to minimize resonances and add weight for better stability (see dealer).
- Isolation pads. Figure (2)
- Adjustable locking spiked feet. Figure (4)
- Holes in top of centre post and base allow speaker wiring to be hidden.

Available Heights (including spikes)

S-18	18" (27 cm)
S-22	22" (42 cm)
S-26	26" (58 cm)
S-30	30" (74 cm)



...and a greater sense of realism. And your neighbors and other family members will hear less so you can even play your system louder if you wish.

For dramatically superior sound and unsurpassed value, look no further than PREMIER™ High-Performance speaker stands!

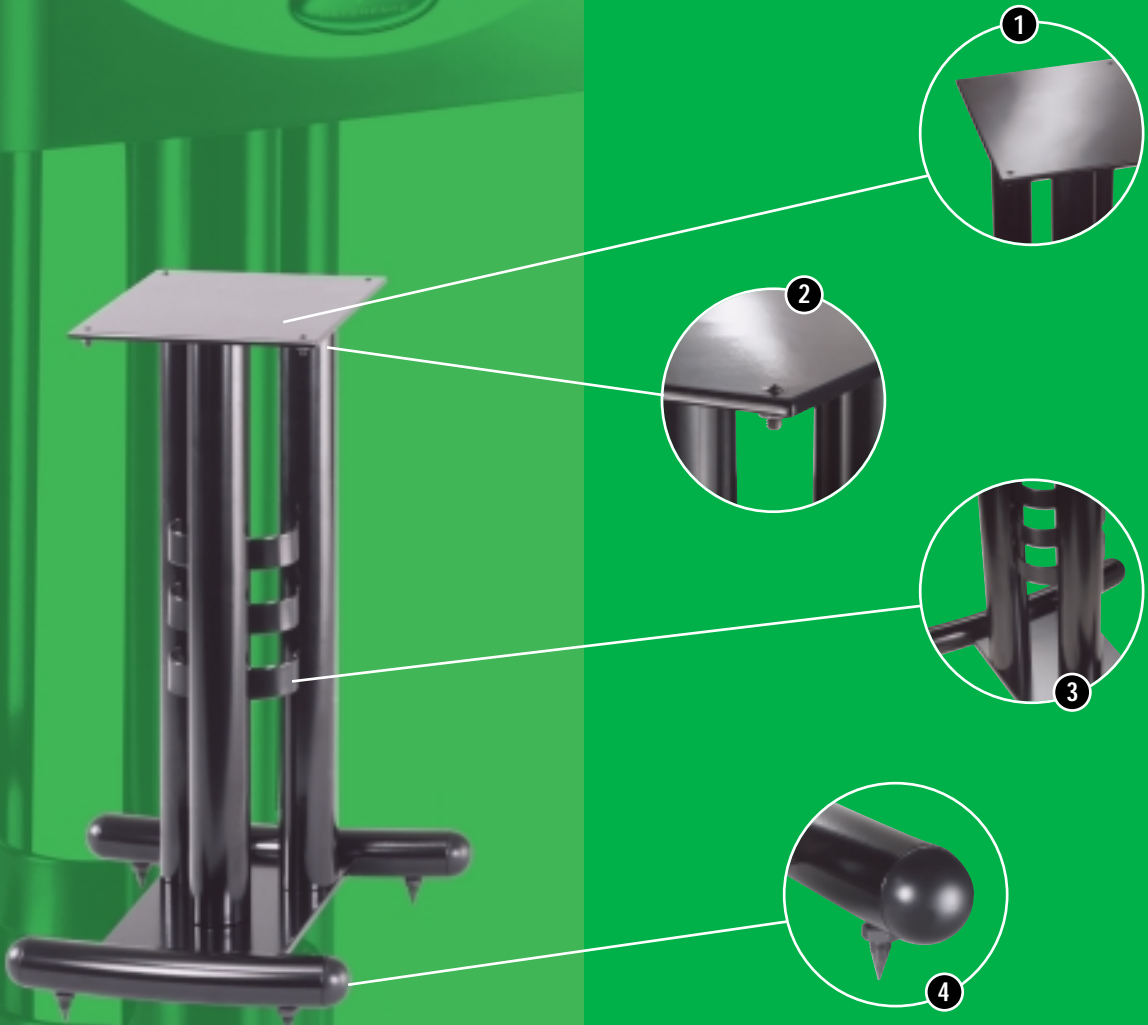
PREMIER™ J-Series Speaker Stands

Features:

- Steel tube and plate construction. Figure (1)
- Centre posts can be filled to minimize resonances and add weight for better stability (see dealer). Figure (3)
- Isolation pads. Figure (2)
- Adjustable locking spiked feet. Figure (4)

Available Heights (including spikes)

- J-50 20-1/2" (52 cm)
- J-60 26" (66 cm)

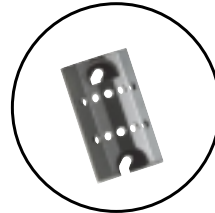


M B - S E R I E S

MB-Series Wall-Mounting Brackets

MB-20

- Positionable Speaker Brackets for speakers with 60 mm spaced mounting holes.
- Suitable Weight Load: 5 lbs (1.875 kgs) each.
- 2 per package.



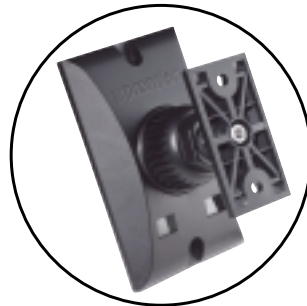
MB-40

- Fully Adjustable Speaker Brackets for speakers with 60 mm spaced mounting holes.
- Suitable Weight Load: 6 lbs (2.75 kgs) each.
- 2 per package.



MB-60

- Positionable Speaker Brackets for speakers with 60 mm spaced mounting holes.
- Suitable Weight Load: 12 lbs (5.5 kgs) each.
- 2 per package.



PREMIER™
STYLE • SYMMETRY • SOLIDITY

AudioStream, Div. Bavan Corp. M.P.O. Box 2410, Niagara Falls, NY 14302 U.S.A. Tel: (905) 632-0180 Fax: (905) 632-0183

PRODUCT DESIGN COPYRIGHT © BAVAN CORPORATION. ALL RIGHTS RESERVED
SPECIFICATIONS AND/OR FEATURES ARE SUBJECT TO CHANGE
WITHOUT NOTICE AS DESIGN IMPROVEMENTS ARE INCORPORATED

COPYRIGHT © BAVAN CORPORATION. ALL RIGHTS RESERVED PREMIER IS A TRADEMARK OF BAVAN CORPORATION