

EV03 Gemini 2-way

Your chance to enter IsoTek's innovative and multi award-winning range of power conditioning solutions. Gemini is a cost effective upgrade for all small two box audio or audio-visual system, delivering improved performance, protection and astonishing value for money. Its compact design allows easy placement. Gemini can also be used in combination with Genesis One sine wave generator to expand power output sockets.



Socket options

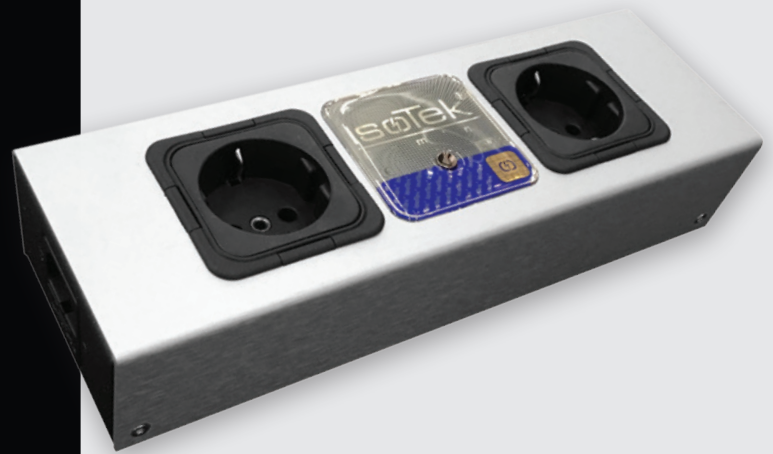
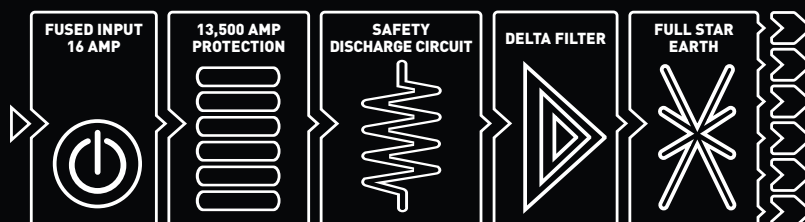


Ideal to use with



Increase the single output socket of Genesis One with Gemini.

Schematic block diagram



Specifications

Removes Common Mode and Differential Mode mains noise.

Reduces RFI pollution by 30dB.

Independent outlets stop Differential Mode cross contamination.

Unique delta filter topology improves product performance.

KERP® (Kirchoff's Equal Resistance Path) ensures equal resistance and equal power delivery across all outlets.

13,500A of instantaneous protection, featuring IsoTek's unique sequential protection system.

Internal wiring; multi-strand silver plated OFC copper with PTFE dielectric.

Available in UK, European, American, Australian and Swiss output sockets.

Maximum continuous power 2,300W.